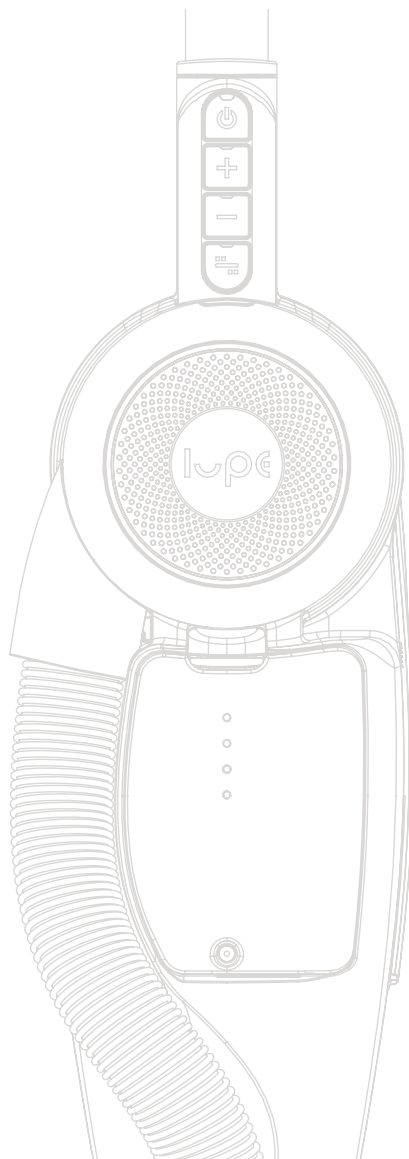


lupé® the power of pure.

pure cordless User Guide

pure cordless



 the power of pure.

contents

safety.....	4
box contents	5
assembly.....	6
charging the battery.....	8
using the pure cordless	9
emptying the bin.....	12
accessories.....	13
cleaning the filters	14
cleaning the roller bar and brush bar	15
removing blockages.....	16
troubleshooting	17
register your pure cordless	19
replacement parts and upgrades	21
compliance.....	22
contact us	22

Version: 1.4

Copyright © 2021 Lupe Technology Limited. All Rights Reserved.

This document contains information owned by Lupe Technology Limited and/or its affiliates. Do not copy, store, transmit or disclose to any third party without prior written permission from Lupe Technology Limited.

Other product and company names may be trademarks or registered trademarks of other companies, and are the property of their owners. They are used only for explanation, without intent to infringe.

safety

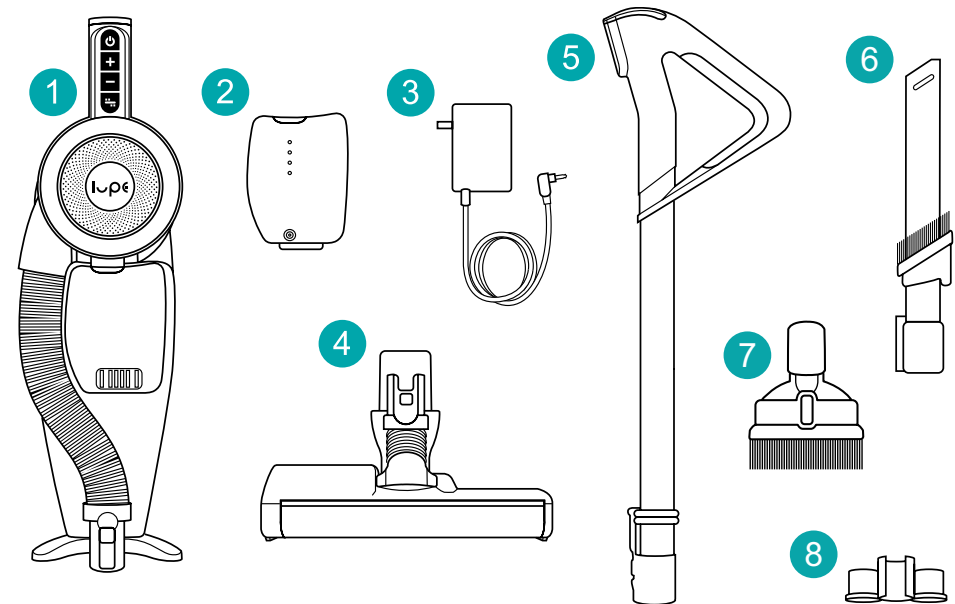


WARNING. Before using the product, read all instructions and safety information. Keep this User Guide in a safe place for future use.

- Only use the product as described in this User Guide or as advised by Lupe.
- Do not modify or disassemble the product in any way other than that described in this User Guide or advised by Lupe.
- Only use chargers, attachments and accessories with this product that are specified by Lupe.
- Only use batteries with this product that are specified by Lupe. Other types of battery may result in fire or explosion. Do not use a battery that is damaged or modified, or expose a battery to fire or high temperatures. Do not create a short circuit across the battery terminals.
- Do not allow children under the age of 8 years old to use the product. Supervise all children who use the product. Do not allow the product to be used as a toy.
- Keep hair, loose clothing, and all parts of the body away from moving parts.
- Keep all openings free from blockages.
- This product is only suitable for dry locations. Do not use the product outdoors, on wet surfaces, or in areas of high moisture. Do not handle any part of the product or charger with wet hands.
- Do not use the product in extremely hot or cold temperatures. Only use the product at temperatures between 10°C (50°F) and 30°C (86°F).
- Do not use the product to pick up water, flammable or combustible liquids, or anything that is burning or smoking. Do not apply fragrance or another scented product to the filters, as they are flammable and can start a fire.
- Do not use the product to pick up sharp objects, such as broken glass.
- If any part of the product or charger, including the charger's cable, is damaged, stop using them immediately. Contact Lupe.
- If the product is not working as expected, or if it has received a sharp blow, been dropped, left outdoors or submerged in water, stop using the product immediately. Contact Lupe.

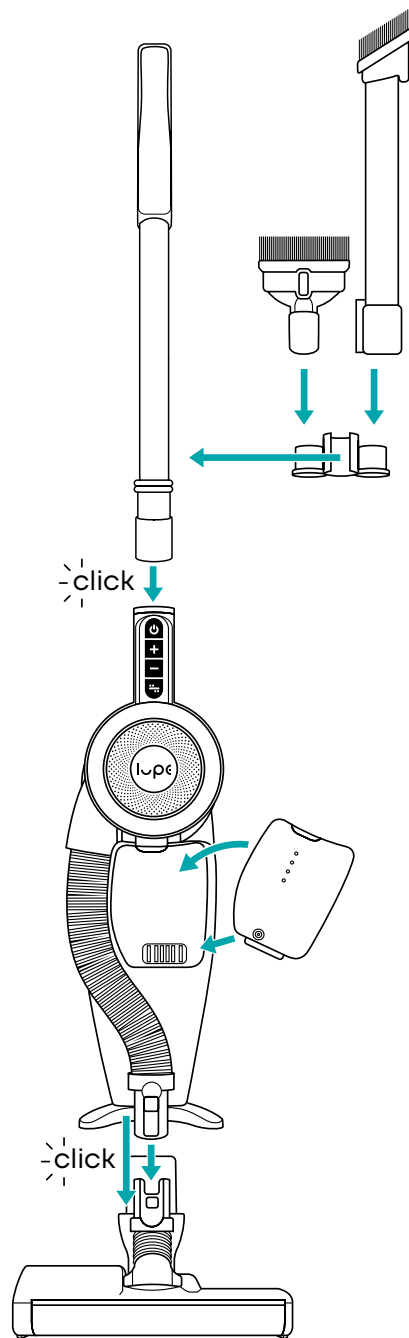
- Unplug the charger when not in use for extended periods.
- Do not use the product without the bin and both filters in place.
- Take care when cleaning on the stairs.
- Before cleaning flooring, rugs or carpets, check the flooring manufacturer's recommended cleaning instructions. The brush bar may damage certain floor surfaces.
- Do not clean any parts of the product using a dishwasher or harsh chemicals.
- Before removing the brush bar or roller, always switch off the product.
- This product is designed for household use only.


box contents

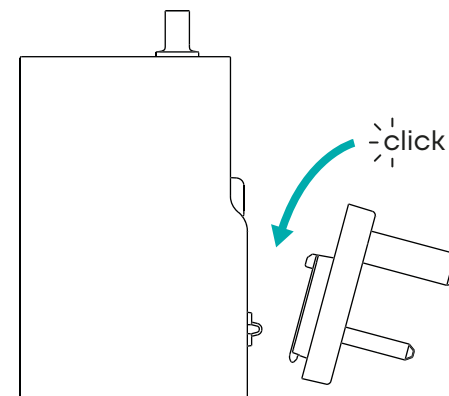


- 1 Main body
- 2 Rechargeable battery
- 3 Charger & detachable plugs
- 4 Cleaning head
- 5 Wand
- 6 Crevice tool
- 7 Upholstery tool
- 8 Accessory mount

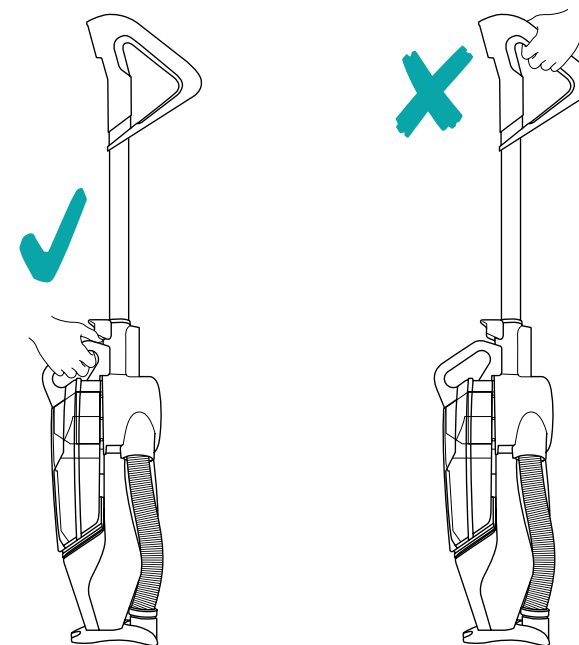
assembly



 Select the correct plug for your region from those provided and attach to the charger.



carrying the product

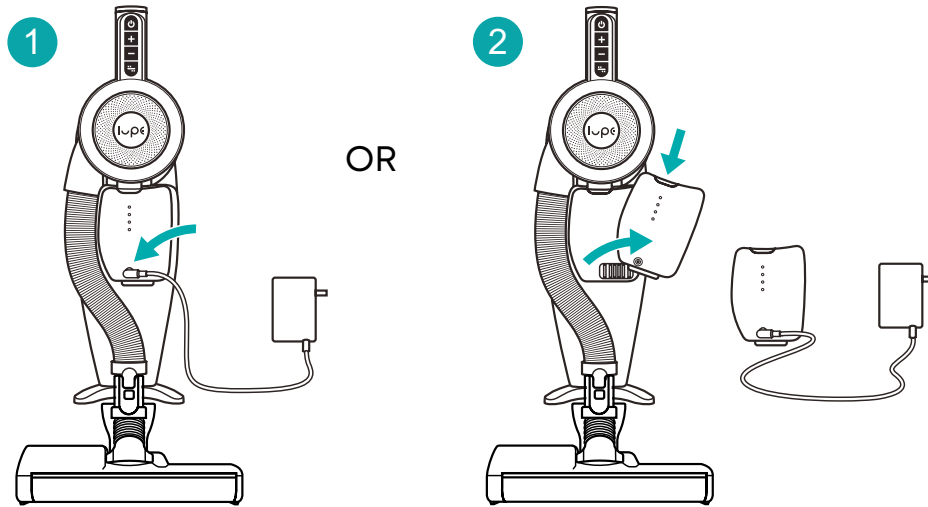


charging the battery

You can charge the battery while it is fitted in the vacuum cleaner, or you can remove it to charge it separately.

While the battery is charging, the status lights flash in sequence. When all status lights turn off, the battery is fully charged.

Charge time is 3.5 hours.



We recommend to fully charge the battery before first use.



While the battery is charging, do not insert or remove the battery from the vacuum cleaner.

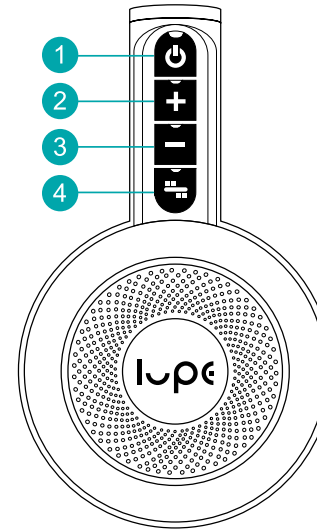


Do not store the battery when it is completely empty. Always ensure the battery has some amount of charge.



WARNING: For the purposes of recharging the battery, only use the detachable supply unit provided with this appliance.

using the pure cordless



- 1 On/off
- 2 Increase power level
- 3 Decrease power level
- 4 Brush bar on/off (default is on)

The Pure Cordless has three power levels, indicated by the lights on the + and - buttons:

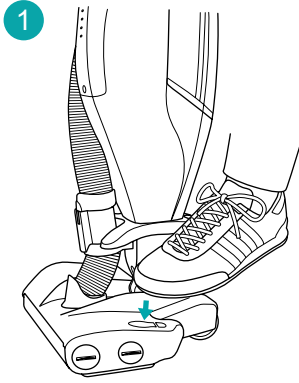
- | | | |
|--|-----|---|
| | off | eco |
| | on | Power level for maximum cleaning time, up to 60 min.
(The - button is illuminated) |
| | off | normal |
| | off | Default level that is suitable for general use, up to 30 min.
(No buttons are illuminated) |
| | on | max |
| | off | Enhanced power for particularly dirty areas, up to 15 min.
(The + button is illuminated) |

To maximise the battery life and prevent overheating, use the eco or normal power level whenever possible.

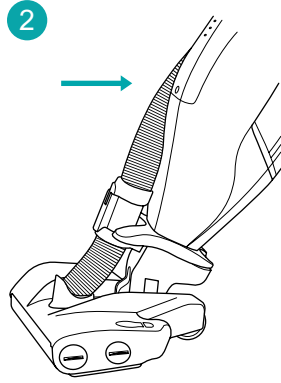


When cleaning delicate floors, or long-pile rugs and long-pile carpets, you may want to turn the brush bar off.

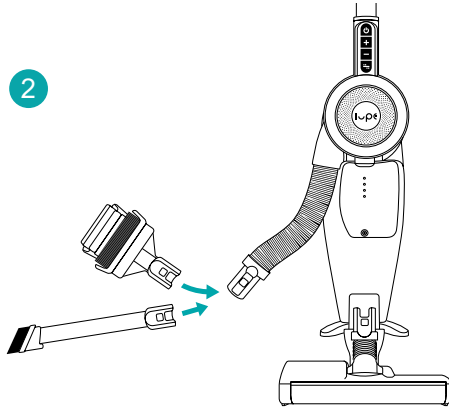
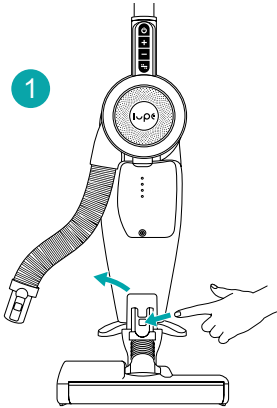
upright mode



Brush bar and roller turn **OFF**
when vacuum is upright.

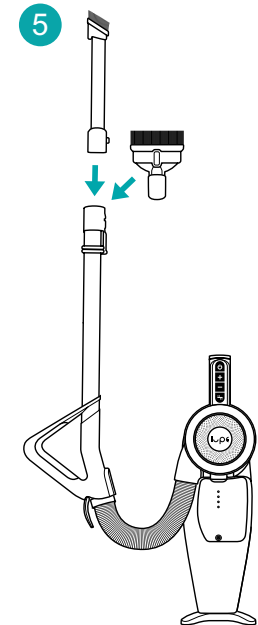
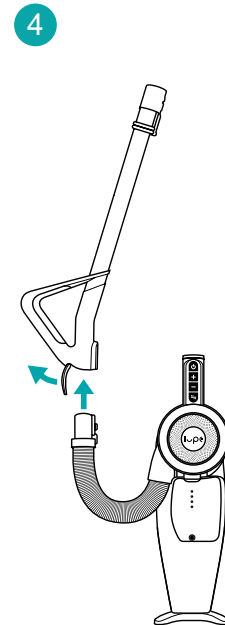
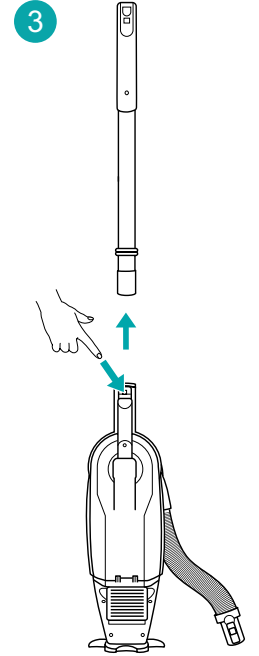
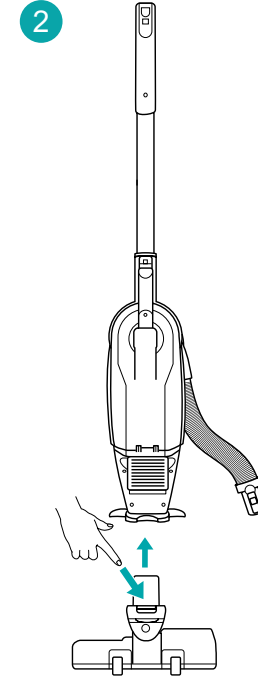
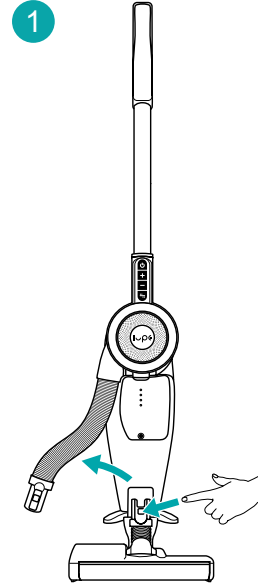


Brush bar and roller turn **ON**
when vacuum is reclined.

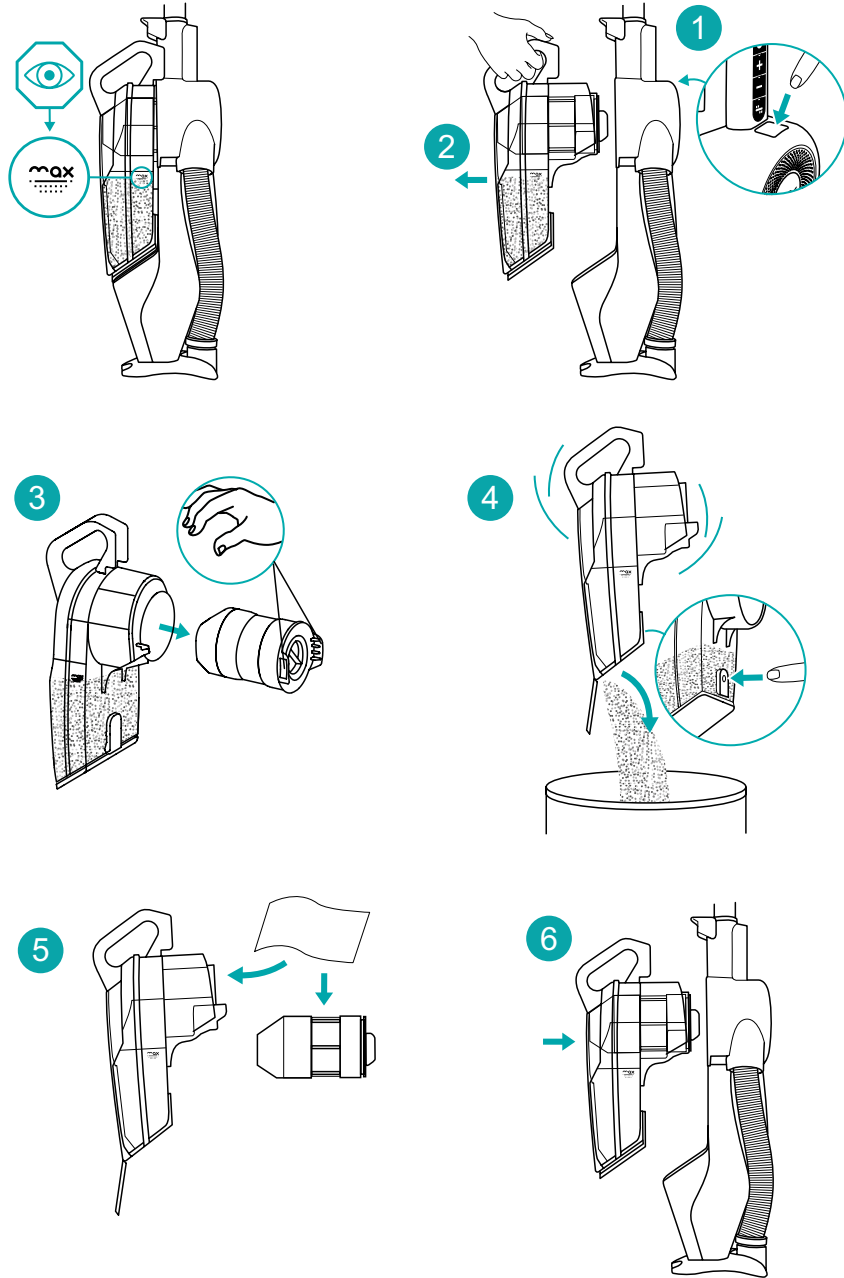


Always hold the handle on the main body when using the
hose for cleaning.

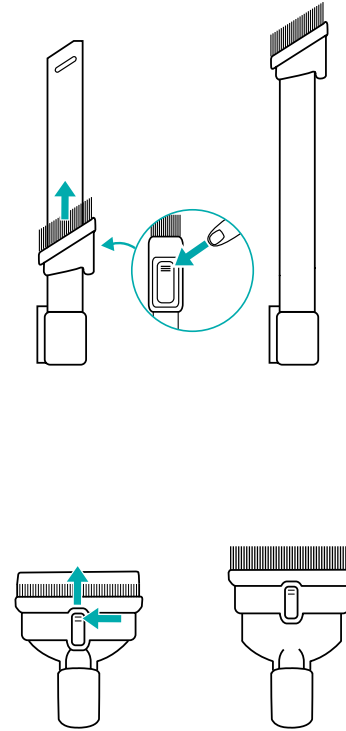
carry mode



emptying the bin



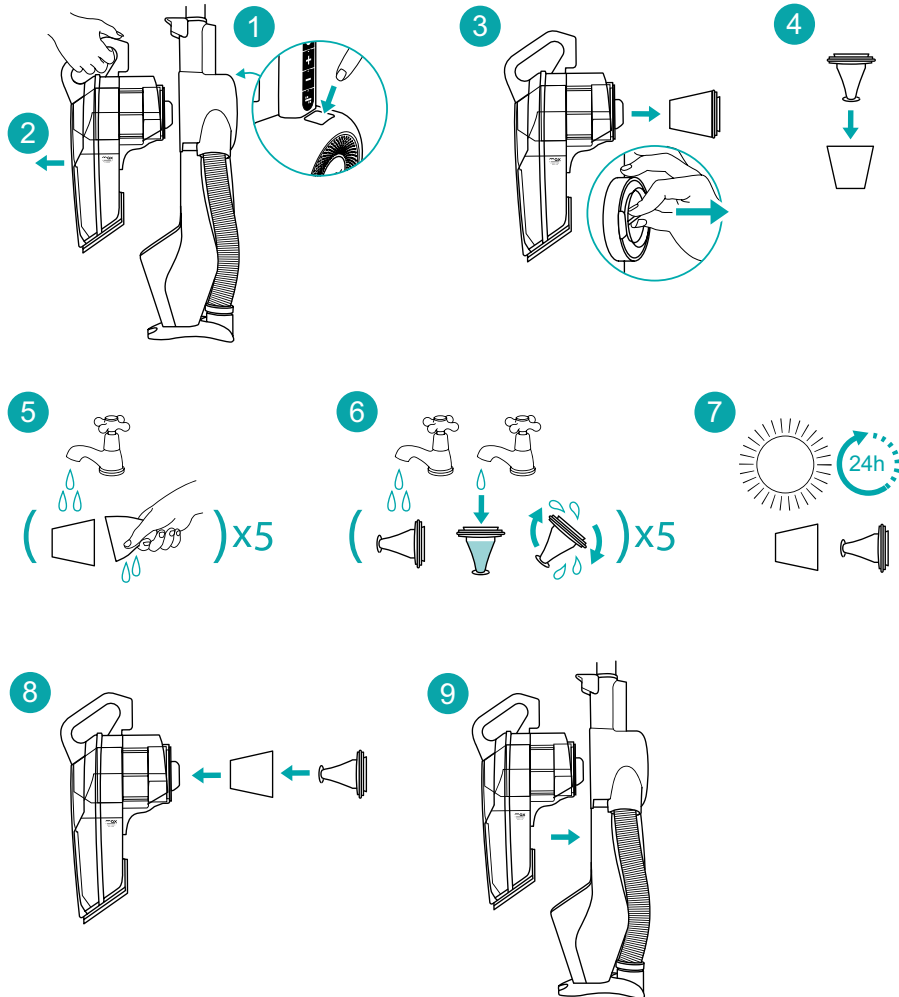
accessories



cleaning the filters

Clean both filters at least once a month.

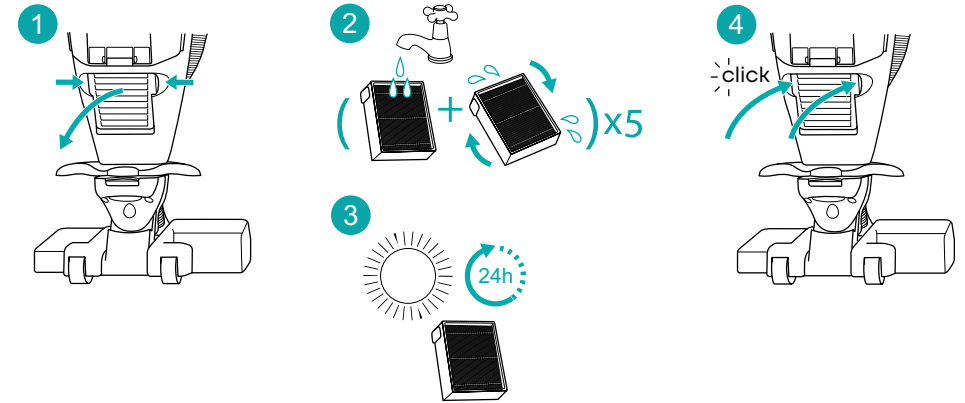
pre-motor filter



- ⚠ Do not dry the filters on a radiator or hot surface.
- ⚠ Ensure all filters are completely dry before re-fitting and using your pure cordless.

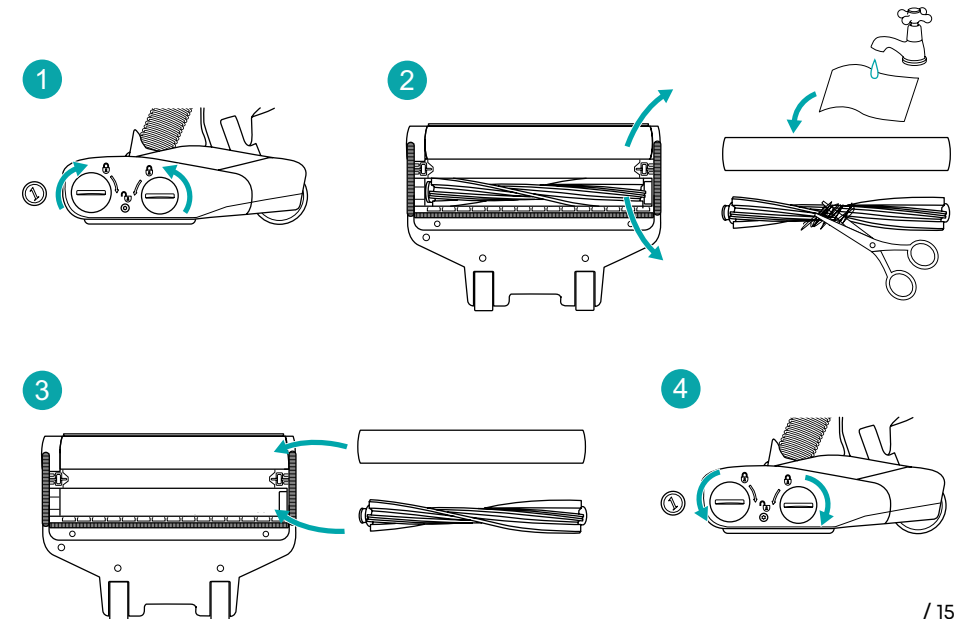
HEPA filter

⚠ When removing or replacing the HEPA filter, hold the filter by the sides. Do not press on the centre of the filter.



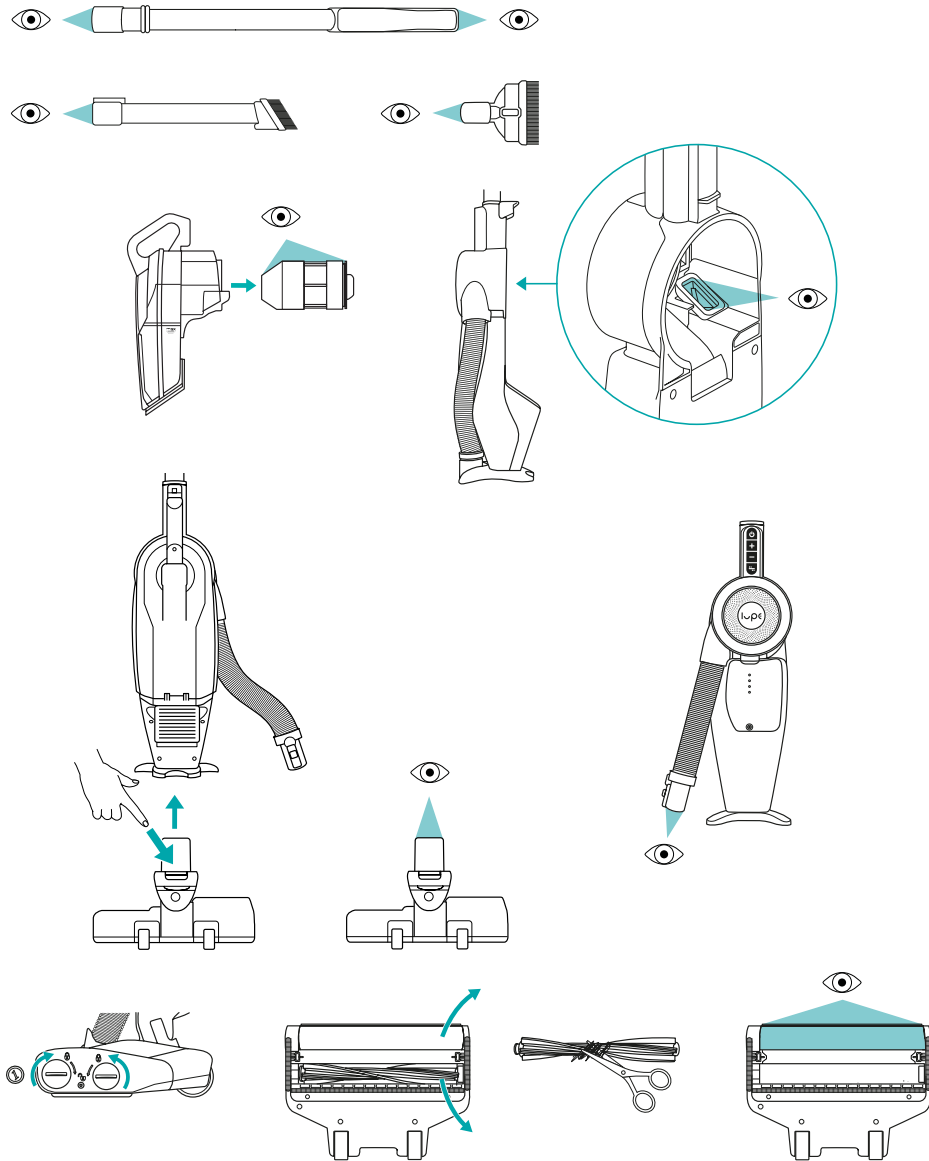
cleaning the roller and brush bar

💡 To remove the roller and brush bar from the cleaning head, use a coin to turn the release caps. Check the release caps for hair and remove if present.



removing blockages

If you can't remove a blockage, contact Lupe.



troubleshooting

Problem	Cause	Button status	Solution
Vacuum cleaner does not power on	Battery is flat or missing		Charge the battery, insert into the vacuum cleaner and press the power button off then on.
	Blockage in airway, filters blocked	All user control buttons flash	Remove any blockages, empty the bin and clean the shroud, (see p12, step 5). Clean the pre-motor and HEPA filter.
	Pre-motor filter is missing	on/off (button 1) flashes	Check that the pre-motor filter is inserted correctly and press the power button off then turn on.
Vacuum cleaner does not pick up dirt	Bin is full, brush bar is clogged		Empty the bin and clean the shroud, (see p12, step 5). Clean the roller and brush bar.
	Blockage in airway, filters blocked		Remove any blockages / clean the pre-motor and HEPA filter. (see p14 & p15)
Vacuum cleaner turns off before the battery is empty	Blockage in airway, filters blocked	All user control buttons flash	Remove any blockages, empty the bin and clean the shroud, (see p12, step 5) Clean the pre-motor and HEPA filter.
	Pre-motor filter removed	on/off (button 1) flashes	Re-insert the bin with pre-motor filter and press the power button off then on.
The battery lights stay on but the vacuum cleaner is off	Vacuum cleaner was not turned off before charging		Press the off button to turn battery lights off. Always press the off button when the battery is flat before charging the battery.
	Pre-motor filter is missing		Check that the pre-motor filter is inserted correctly and press the power button off then on.
The brush bar and roller stop working	Blockage in roller, blockage in brush bar of the cleaning head	Brush bar on/off (button 4) flashes	Press the brush bar on/off button. If the button still flashes, lift the cleaner head off the surface and press the button again. If the button still flashes then power off the product, turn the twist caps, remove the brush bar and roller then clear any blockages.
	Too much power for type of floor	Brush bar on/off (button 4) flashes	Some surfaces may cause the brush bar and roller to stop. Decrease the power and then try again.

Still having problems? Contact us at www.lupetechnology.com

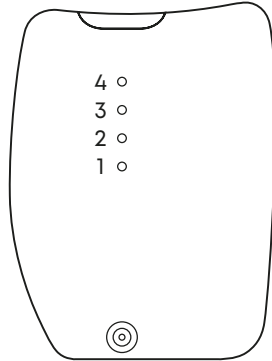
battery status lights

The battery lights 1 - 4 flash WHITE in sequence as they charge. When the battery is fully charged all lights 1 - 4 turn off, (if the lights do not turn off press the power button off).

The lights go out in reverse sequence (4 - 1) during discharge.

LED 1 will flash white when there is approximately 10% charge remaining.

If there is a problem, the status lights on the battery may turn RED.



Status light	Meaning	Solution
Light 1 is flashing red	Battery is empty	Charge the battery
Lights 1 & 2 are flashing red	Incorrect charger connected	Connect the supplied Lupe charger instead
Lights 1 & 4 are flashing red	Battery is too cold	Keep the battery at room temperature for 5 hours before use
Lights 3 & 4 are flashing red	Battery is too hot	Allow the battery to cool down for 1 hour before use. Always use at room temperature.
All lights are flashing red	Fault	Stop using the product and contact Lupe

Still having problems? Contact us at www.lupetechnology.com

register your pure cordless

Lupe customer care

Thank you for choosing Lupe.

We are confident that you will receive many years' high performance use and satisfaction from your machine. If you have any queries regarding your Lupe appliance visit www.lupetechnology.com.

If your machine needs repair or maintenance other than that shown in this manual or advised by Lupe then please contact Lupe directly.

How do I register my Lupe warranty?

Register your warranty online within 28 days of purchase at www.lupetechnology.com. You will be covered for parts and labour for the warranty period.

Note: If you purchased through www.lupetechnology.com, your warranty is automatically applied.

What does a Lupe warranty cover?

Your statutory rights are not affected by this warranty.

A Lupe warranty covers the repair or replacement (at Lupe's discretion) of your Lupe machine if it is found to be defective due to faulty materials or workmanship within the warranty period.

If any part is no longer available Lupe will replace it with a functional replacement part.

Where is the Lupe warranty valid?

This warranty is valid in any country if the machine is purchased through www.lupetechnology.com, or where it has been purchased through an authorised seller.

What isn't covered by a Lupe warranty?

Lupe machines are engineered and constructed from high quality materials in order to provide many years of use in normal domestic settings. If it is used in the way it is intended and breaks down within the warranty period, it is our responsibility to repair or replace it.

There are circumstances in which a Lupe warranty does not cover the repair or replacement of a machine. Here's what isn't covered:

1. Normal wear and tear, including parts that might wear out over time (e.g. belts, brush bar, roller, hoses, batteries, filters, accessory tools etc.)
2. Reduction in battery discharge time due to age and normal wear and tear of the battery within the temperature range set out under the safety instructions.
3. Accidental damage, faults caused by negligent use or care, misuse, neglect, careless operation or handling of the vacuum cleaner which is not in accordance with the Lupe user guide supplied with your machine in the country in which it was purchased.
4. Damage as a result of use not in accordance with the rating plate.
5. Damage caused by not carrying out the recommended appliance maintenance.
6. Blockages - please refer to the user guide.
7. Damage from external sources such as transit, weather, electrical outages or power surges.
8. Failures caused by circumstances outside of Lupe's control.
9. Cosmetic damage to the appliance even if only through normal use.
10. Faults caused by incorrect assembly or use of parts not assembled or installed in accordance with the instructions provided by Lupe.
11. Use of parts and accessories which are not Lupe genuine components. A range of genuine Lupe spares and accessories is available at www.lupetechnology.com.
12. Repairs or alterations carried out by parties other than Lupe or its authorised agents.

What happens when my warranty runs out?

Lupe designs products to last and also be upgraded too, so that you can keep your machine relevant and reduce waste.

A full range of spares are available at www.lupetechnology.com along with expert advice to keep your machine in great condition.

What are the terms and conditions of the warranty?

The terms and conditions of a Lupe warranty are as follows:

The warranty becomes effective at the date of purchase.

Please keep your receipt at all times. Should you need to use your warranty we will need to verify the information you have supplied is correct. Please note that without this proof the warranty may be invalid.

All work will be carried out by Lupe or its authorised agents.

Any parts which are replaced will become the property of Lupe.

The repair or replacement of your machine under warranty will not extend the period of the warranty.

The warranty provides benefits which are additional to and do not affect your statutory rights as a consumer.

Replacement parts and upgrades

We support long-term ownership and supply replacement parts. As technology moves on, we will also make upgrades available for key components.

Visit www.lupetechnology.com for further information.

compliance



Hereby, Lupe Technology Limited declares that the Pure Cordless meets all requirements for the EU and UK in regards to Safety and EMC, with the following directives:

Safety:

- 2014/35/EU Low Voltage Directive.
- Electrical Equipment (safety) Regulations 2016

EMC:

- 2014/30/EU Electromagnetic Compatibility Directive.
- Electromagnetic Compatibility Regulations 2016

This product is covered by legislation for waste electrical and electronic products (EN2002/96/EC).

The Pure Cordless is designed to be as long-lasting as possible, and almost every part can be replaced. However, if the vacuum cleaner no longer functions and you do not wish to repair or upgrade, then it and the Li-Ion battery it contains should not be disposed of with general household waste. The battery should be removed from the vacuum cleaner and both should be recycled at a recognised recycling facility. Contact your local governing body or recycling centre for information on the recycling of electrical products. You can also contact Lupe directly, and we can arrange the recycling or reuse of your product.

contact us

lupetechnology.com

Lupe Technology Limited
Folly House
Badminton Road
Old Sodbury
Bristol, UK
BS37 6LR

EU Authorised Representative

Comply Express Lda, StartUp
Madeira, EV 141, Campus da
Penteada, 9020 105 Funchal

about Lupe

Lupe creates products with the emphasis on best in class performance, long service and life cycle. Consumers should be encouraged to keep appliances for longer and not to throw away and replace them unnecessarily. It is down to manufacturers to make this easier and by only releasing products with step changes in performance, Lupe intends to lead the way.

The mission with the pure cordless is to create a cordless vacuum that lives up to consumers' expectations in a world of underperforming products.

Our founding principles of endurance and durability will offer consumers many years high performance use with the pure cordless.

